

ELLINICON 4

11 PROTIS str. & BETA
ELLINICON

apartment

D.12

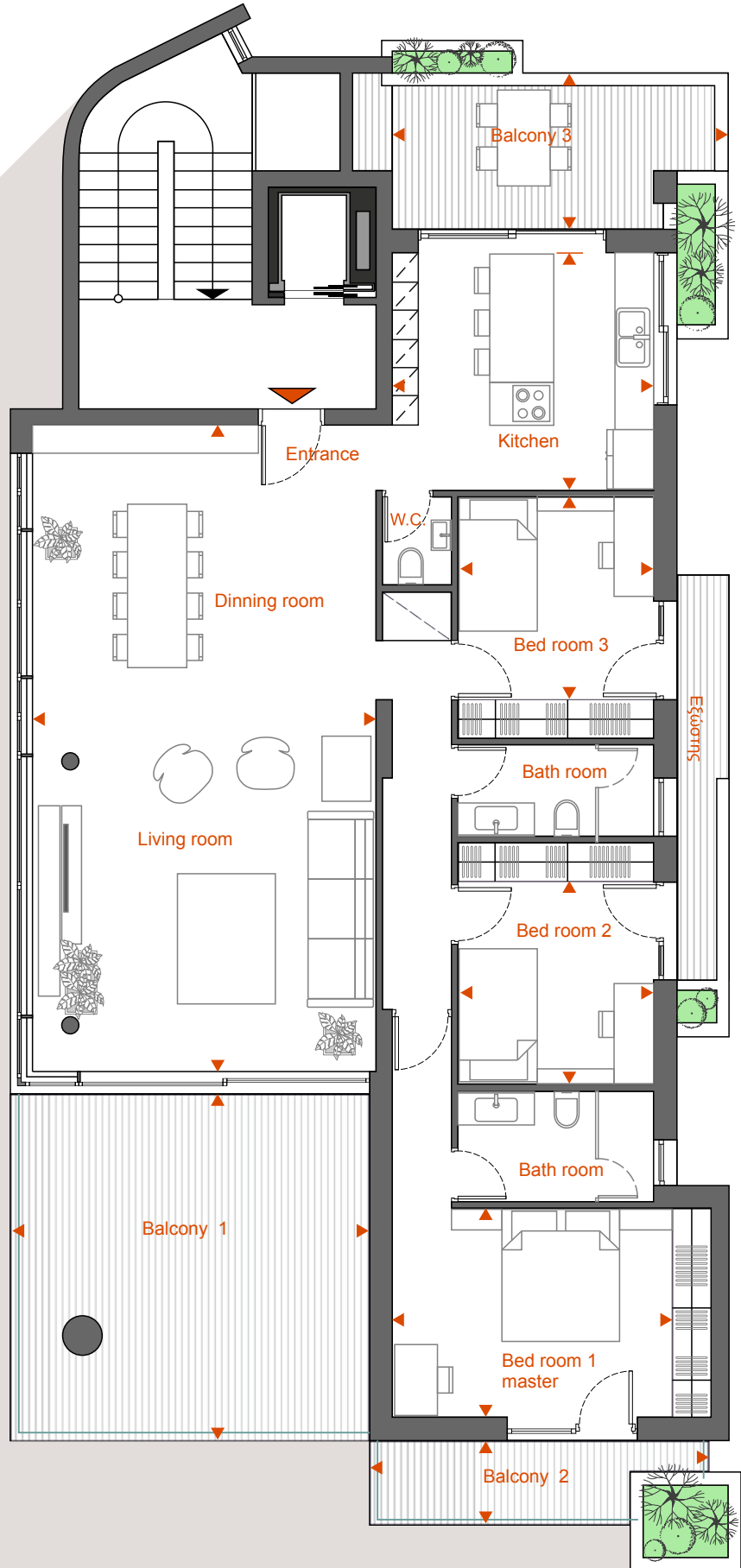


ELLINICON 4

11 PROTIS str. & BETA

Apartment
D.12
 147,50 m²

Apartment **D.12** is situated on the **3rd floor**, is a whole floor Apartment, and has an area of **147.50 m²**



◀▶ MEASUREMENT POINTS

Living room - Dining room
 5.25m x 9.90m

Kitchen
 4.00m x 3.65m

Bed room 1
 (Master) 4.30m x 3.20m

Bed room 2
 3.00m x 3.10m

Bed room 3
 3.00m x 3.10m

Balcony 1
 5.50m x 5.30m

Balcony 2
 5.50m x 1.30m

Balcony 3
 5.15m x 2.40m



ELLINICON 4

11 PROTIS str. & BETA

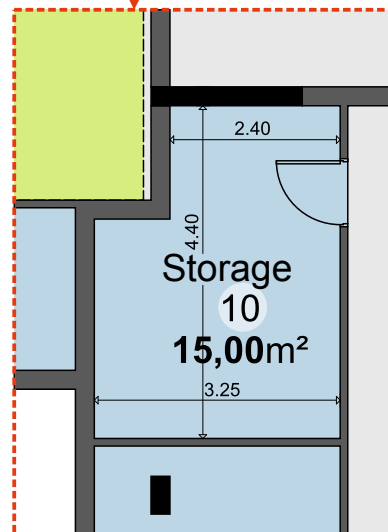
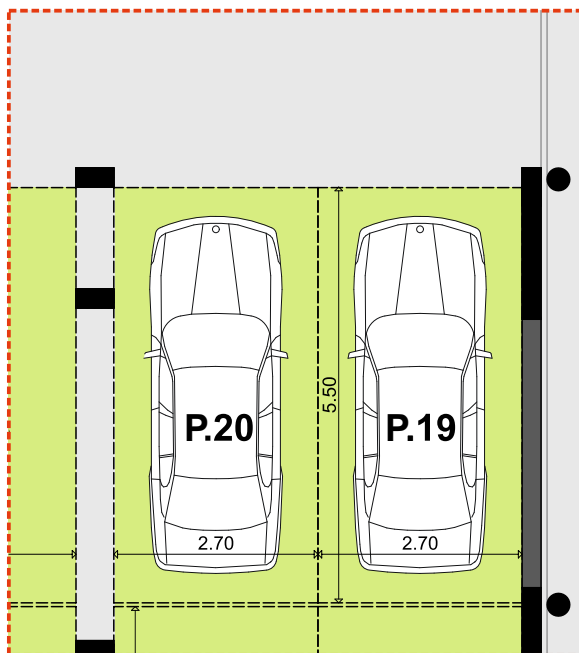
Apartment

D.12

147,50 m²

Basement:

- Storage Room 15,00 m²
- two parking spots



ELLINICON 4
11 PROTIS str. & BETA
PHOTO REALISTICS

Apartment
D.12
147,50 m²



ELLINICON 4
11 PROTIS str. & BETA
PHOTO REALISTICS

Apartment
D.12
147,50 m²

