

ALIMOS 5

4 THEOTOKI str., PANI

apartment

D.6



ALIMOS 5

4 THEOTOKI str., Pani

apartment **D.6**
128.50 m²

D.6 Apartment is situated on the **3rd floor** and has an area of **128.50 m²**.

◀▶ MEASUREMENT POINTS

Living room
5.35m x 4.80m

Kitchen - Dining room
4.10m x 6.70m

Bedroom 1 (master)
3.40m x 3.00m

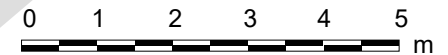
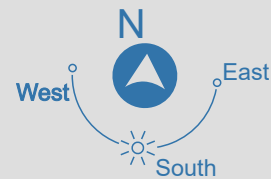
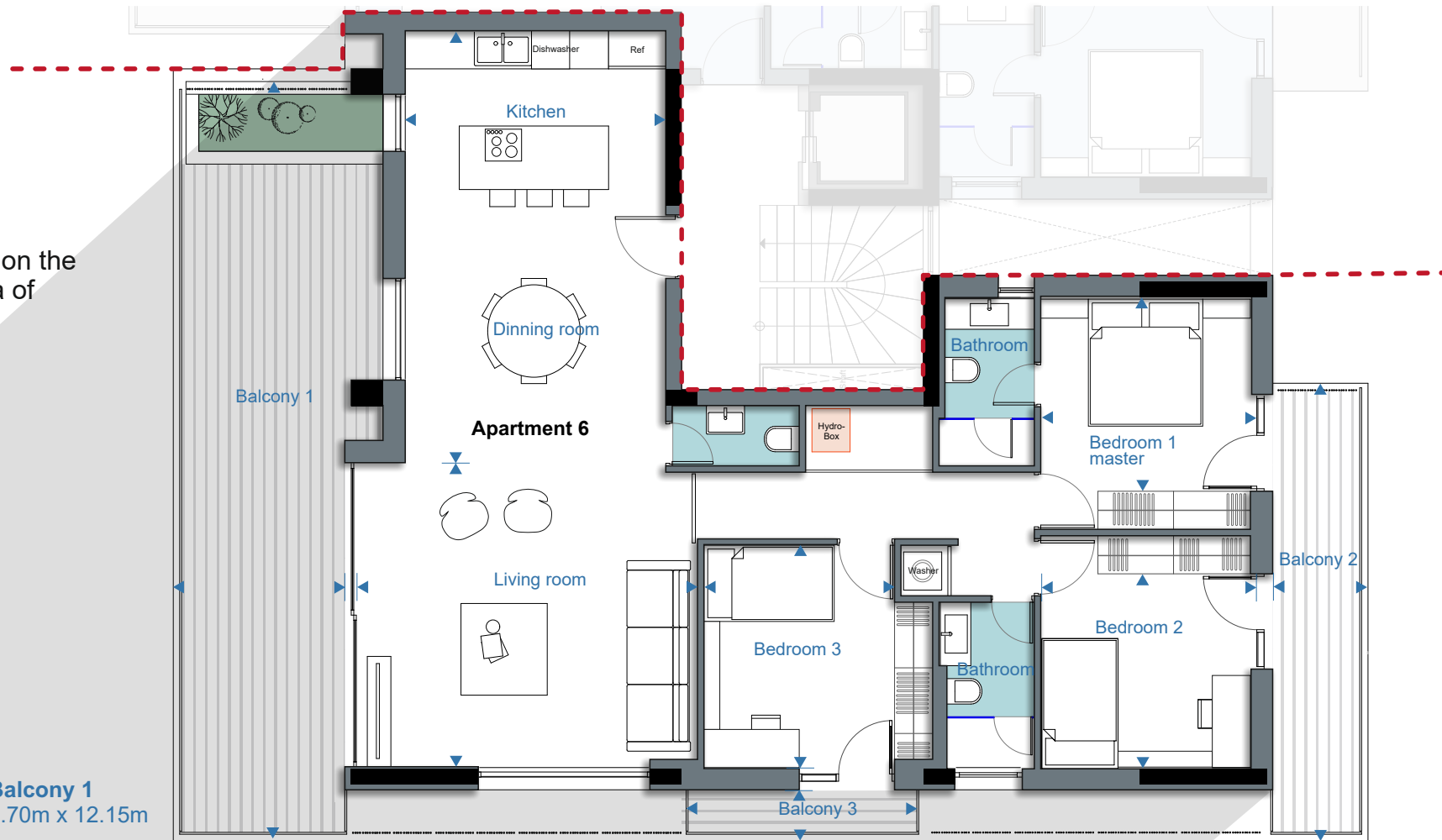
Bedroom 2
3.40m x 2.95m

Bedroom 3
3.00m x 3.55m

Balcony 1
2.70m x 12.15m

Balcony 2
1.50m x 7.20m

Balcony 3
3.75m x 0.80m



ALIMOS 5

4 THEOTOKI str., Pani

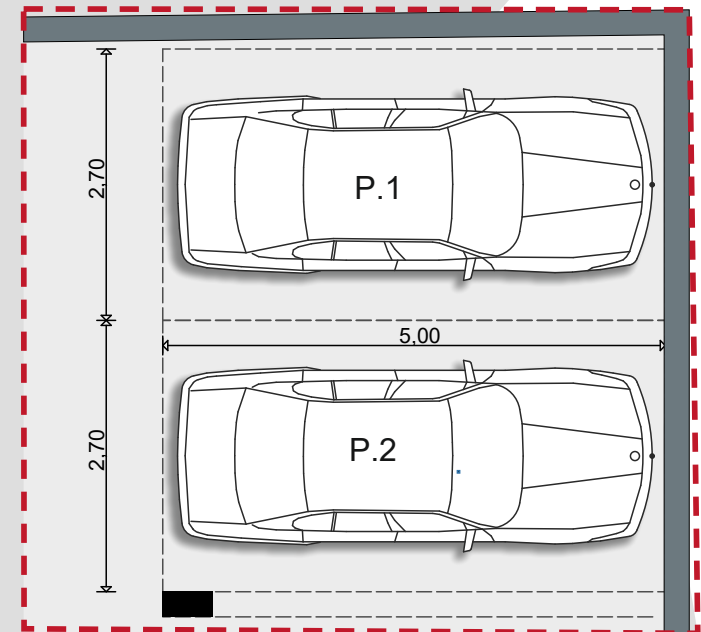
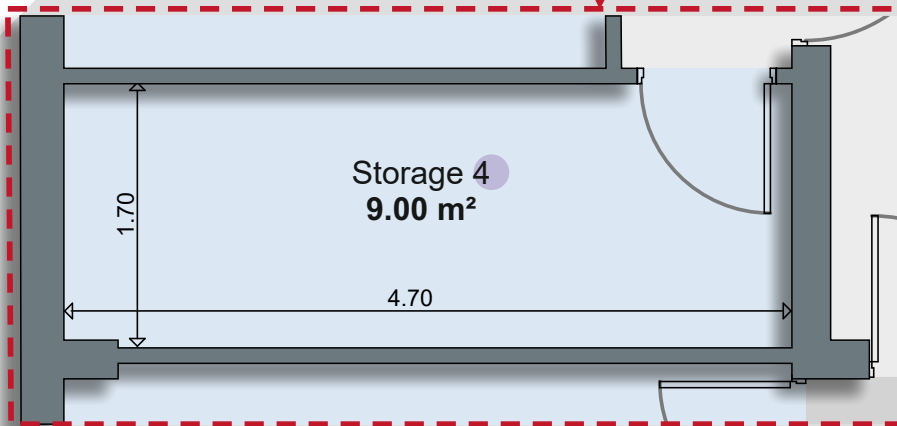
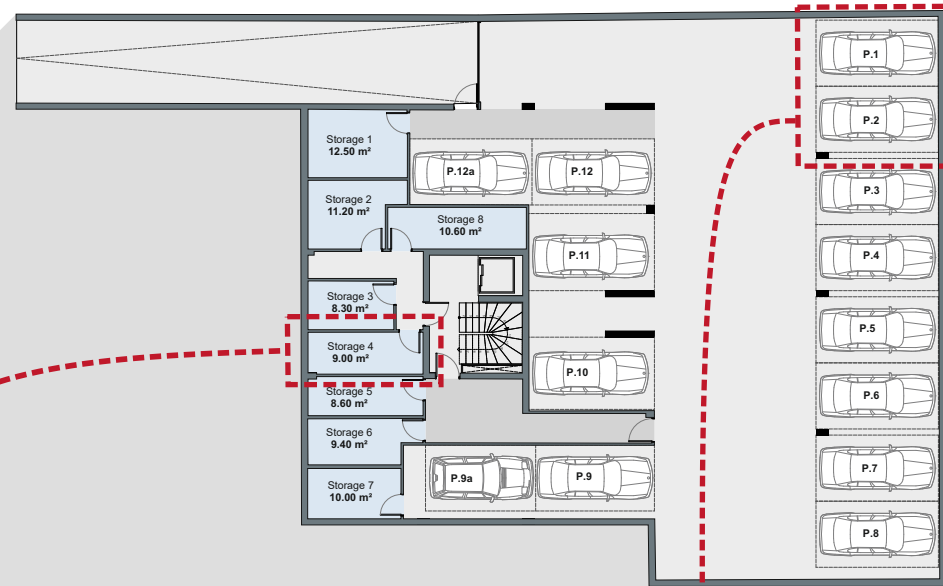
apartment D.6

128.50 m²

Apartment D.6 has on the **basement**:

Storage room 4 = **9.00 m²**

Two parking spots, **P.1 and P.2**



ALIMOS 5

4 THEOTOKI str., Pani

apartment **D.6**

128.50 m²

RENDERINGS



ALIMOS 5

4 THEOTOKI str., Pani

apartment D.6

128.50 m²

RENDERINGS

