

# ALIMOS 5

4 THEOTOKI str. PANI

apartment

**D.8**



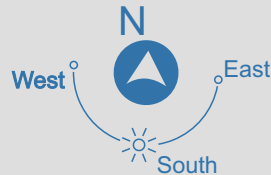


# ALIMOS 5

4 THEOTOKI str., Pani

apartment **D.8**  
**178.50m<sup>2</sup>**

**D.8** Apartment is situated on the **5th floor** and has an area of **178.50 m<sup>2</sup>** and it is connected via an inner staircase with the Apartment's flat roof.



### MEASUREMENT POINTS

**Living room**  
5.50m x 6.30m

**Kitchen - Dinning room**  
9.55m x 3.80m

**Walk-in closet**  
2.40m x 2.60m

**Bedroom 1 (master)**  
3.55m x 4.05m

**Bedroom 2**  
3.20m x 3.05m

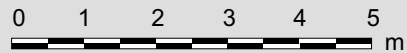
**Bedroom 3**  
3.60m x 2.90m

**Balcony 1**  
7.90m x 4.45m

**Balcony 2**  
11.00m x 1.80m

**Planted area**  
6.05m x 3.35m

5th floor



# ALIMOS 5

4 THEOTOKI str., Pani

apartment **D.8**

**178.50m<sup>2</sup>**

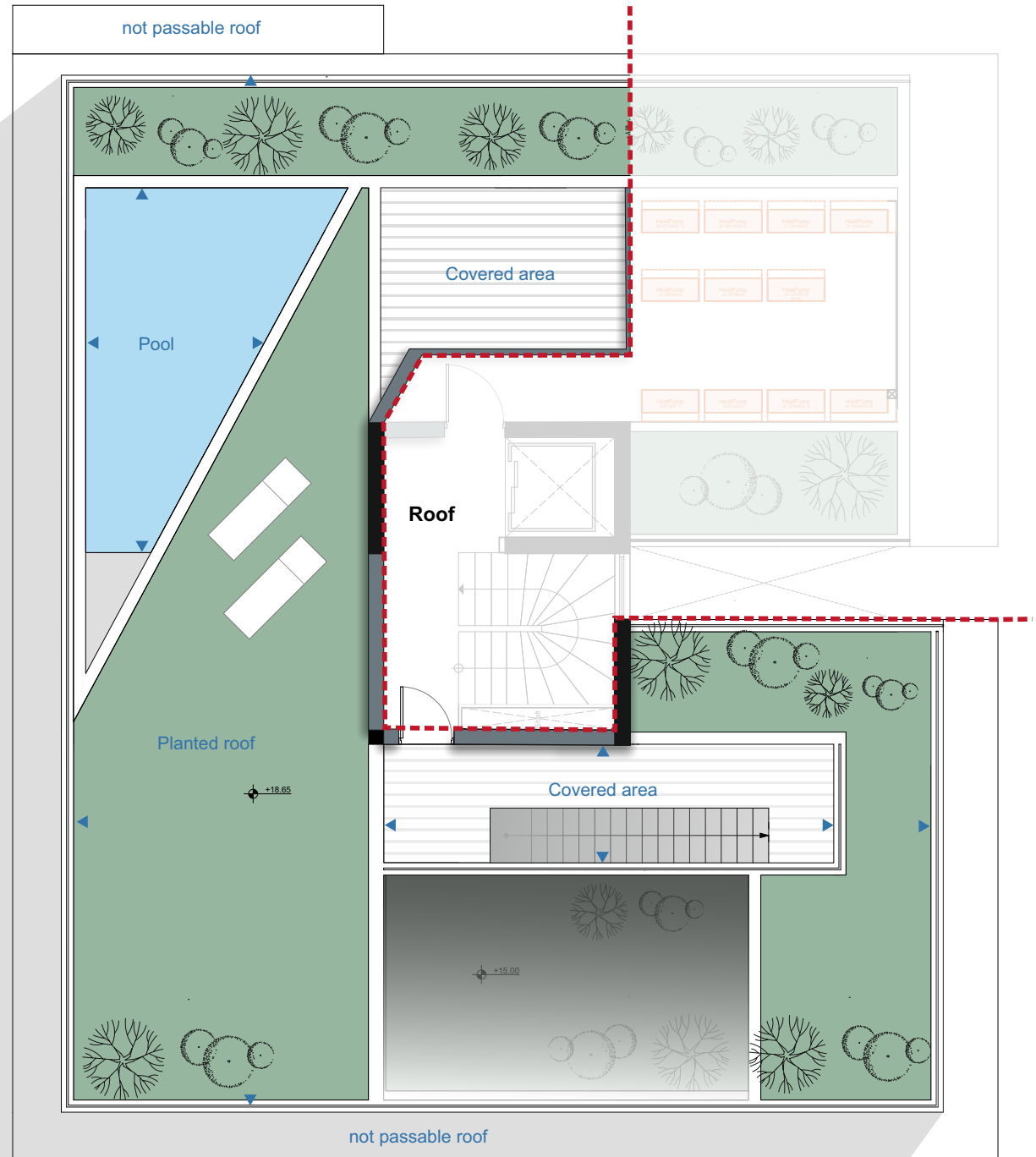
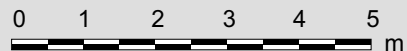
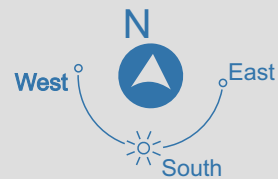
Exclusive use of the **153.00m<sup>2</sup> flat roof**, of which the **67.00m<sup>2</sup> are under a roof** and the rest are a green area and the Apartment's **private Pool**. It has an independent entrance from the staircase, with access to the central elevator.

◀▶ MEASUREMENT POINTS

**Planted roof**  
14.60m x 17.40m

**Covered area**  
7.40m x 1.95m

**Pool**  
16.20m<sup>2</sup>



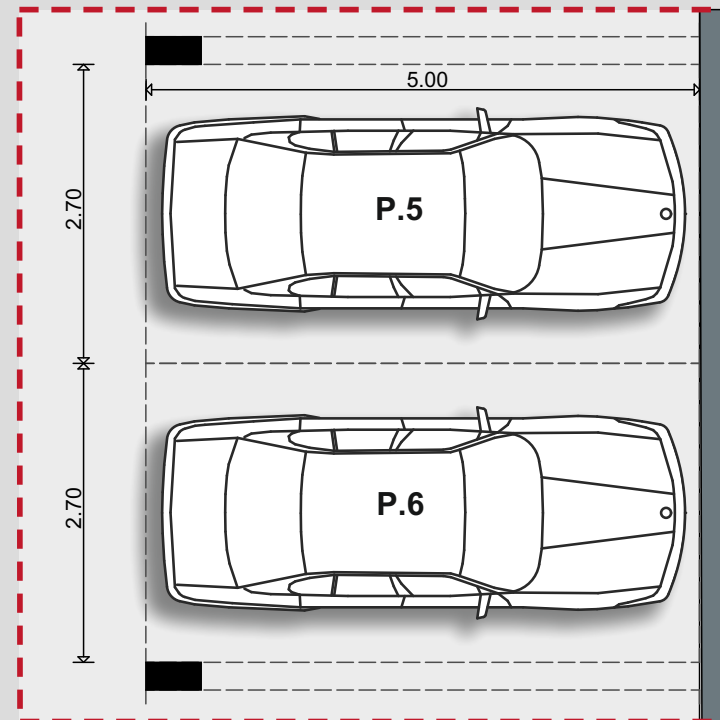
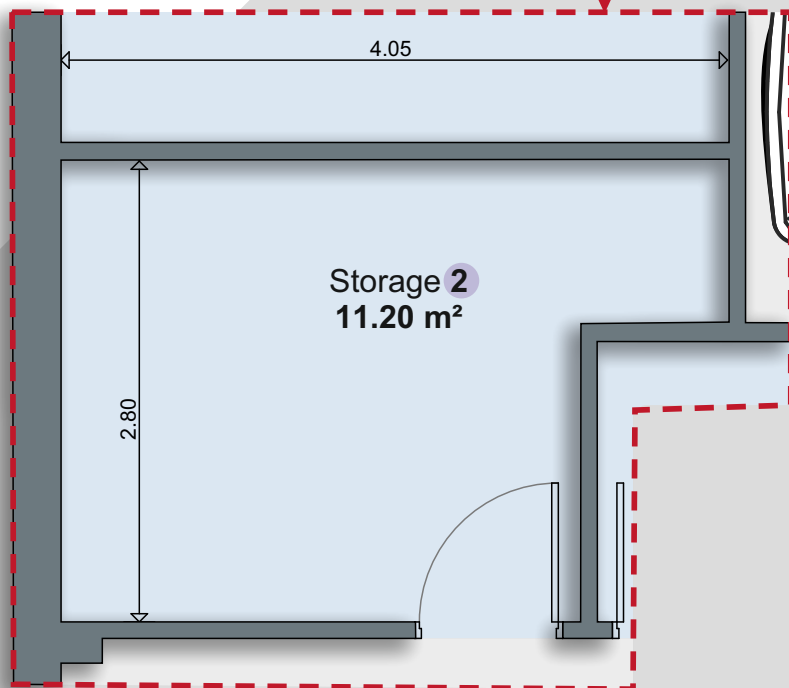
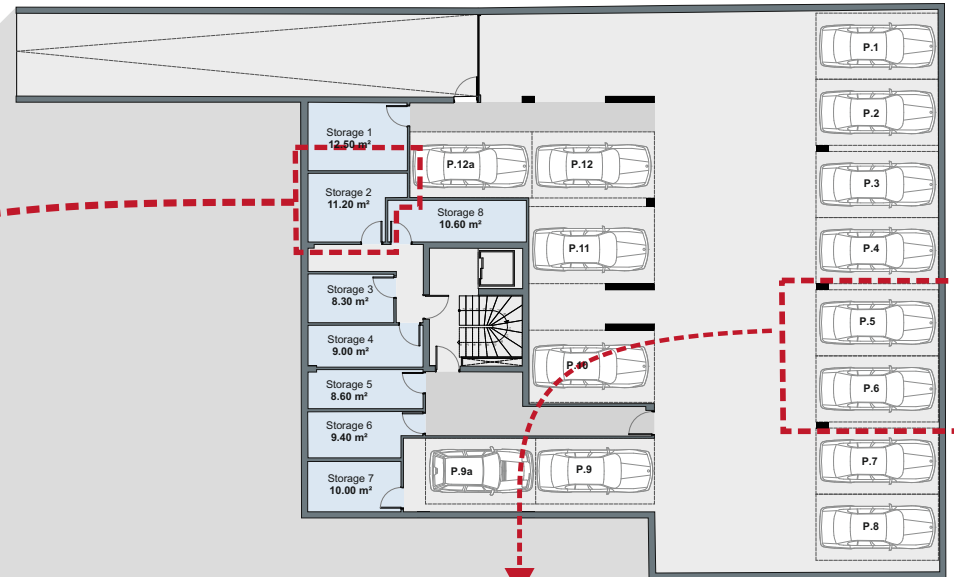
# ALIMOS 5

4 THEOTOKI str., Pani

apartment **D.8**  
**178.50m<sup>2</sup>**

Apartment D.8 has on the **basement**:

Storage room 2 = **11.20 m<sup>2</sup>**  
Two parking spots, **P.5 and P.6**



# ALIMOS 5

4 THEOTOKI str., Pani

apartment D.8

178.50m<sup>2</sup>

RENDERINGS

